

Signal Transmission System for Doors & Gates



Product Information

Inductive Transmission System

Our **ELMON inductive** signal transmission system transmits the signals from the moving safety contact edges to the control unit on automated sliding gates. This is done maintenance-free and wear-free using 2 coil cores that communicate with each other via a wire cable. The functionally safe and type-tested system is completed by an evaluation unit and is insensitive to external interference.



Advantages of the inductive system

- Fastest signal transmission for sliding gates, switching time <30 ms
- Maintenance-free system, no need to replace batteries
- Durable, wear-free and permanently available
- Weather-resistant
- Steel cable with 2 additional wires for connecting both moving safety contact edges
- Integration of the stationary safety contact edges

Technical Data

ELMON inductive 71-242 Set S

- Safety category 3, PL e
- IP 65 (coil cores)
- IP 20 (control unit)
- 24 V AC/DC \pm 10%
- - 25 to + 55 °C
- Set consisting of safety relay, coil core SPK 54 , SPK 55 and mounting set

ELMON inductive 74-312 Set S

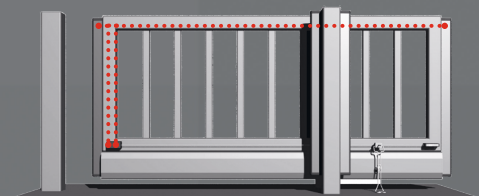
- Safety category 3, PL e
- IP 65 (coil cores and control unit)
- 24 V AC/DC, 230 V AC, \pm 10% each
- - 25 to + 55 °C
- Set consisting of safety relay, coil core SPK 54 S, SPK 55 and mounting set

As an alternative to mounting on the door leaf, special coil cores and a mounting set for installing the cable system in the track profile are also available.

Connection of Cable System in Comparison

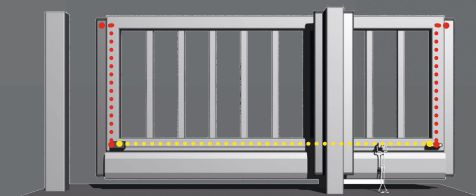
Conventional:

Cable along the gate`s entire length needed.



ASO Cable System:

Contact edges can be connected to either side of the gate.



Radio Transmission System

The radio transmission system is a functionally safe system for wireless signal transmission of switching pulses from safety contact edges in the door and gate area. Thanks to its high compatibility with all common motor control units, the system can be used universally on almost all door and gate types. It is also easy to install when retrofitting.



Advantages of the radio system

- Wireless signal transmission
- Space-saving
- Weatherproof
- Universally applicable
- Long range
- Optionally expandable with external antenna

Technical Data

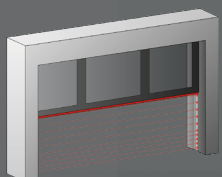
Receiver RB3 R868 W

- Safety category 2, PL d
- IP 65
- 12/24 V AC/DC $\pm 10\%$
- - 20°C to + 55°C
- 82 x 190 x 40mm
- Nominal range 100m

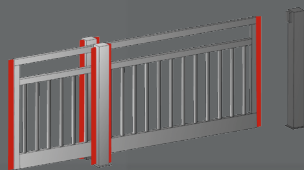
Transmitter RB3 T868 WD

- Safety category 2, PL d
- IP 65
- - 20 °C to + 55°C
- 151 x 60 x 23mm
- Nominal range 100m

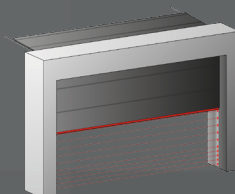
Applications



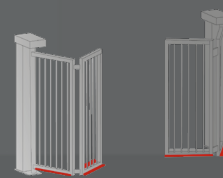
High-speed Doors



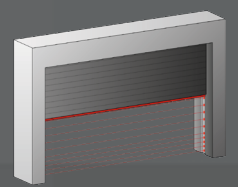
Sliding gates



Sectional doors



Quick folding doors



Rolling doors

Headquarters Europe

ASO GmbH
Hansastraße 52
59557 Lippstadt
GERMANY

Tel +49 2941 9793-0
Fax +49 2941 9793-299
www.asosafety.com
sales-eu@asosafety.com

Headquarters USA

ASO Safety Solutions Inc.
350 N Frontage Road
Landing, NJ 07850
USA

Phone +1 973 5869600
Fax +1 973 5861590
www.asosafety.com
sales-us@asosafety.com

Headquarters Asia Pacific

ASO Safety Solutions Nanjing Co. Ltd.
Jinma Lu 3 Maqun Scientific Park
210049 Nanjing
CHINA

Phone +86 25 856 73990
www.asosafety.cn
sales-cn@asosafety.com



DOC0001625 Technical data Rev 00
as of 07.January 2025
Technical changes reserved

www.asosafety.de